

INDEX RANGE

Shrikant Chouhan

shrikant.chouhan@kotak.com
+91 22 6621 6360

NIFTY : 5686
Range : 5680-5730
Resistance : 5695-5730-5765-5775
Support : 5680-5670-5634-5624

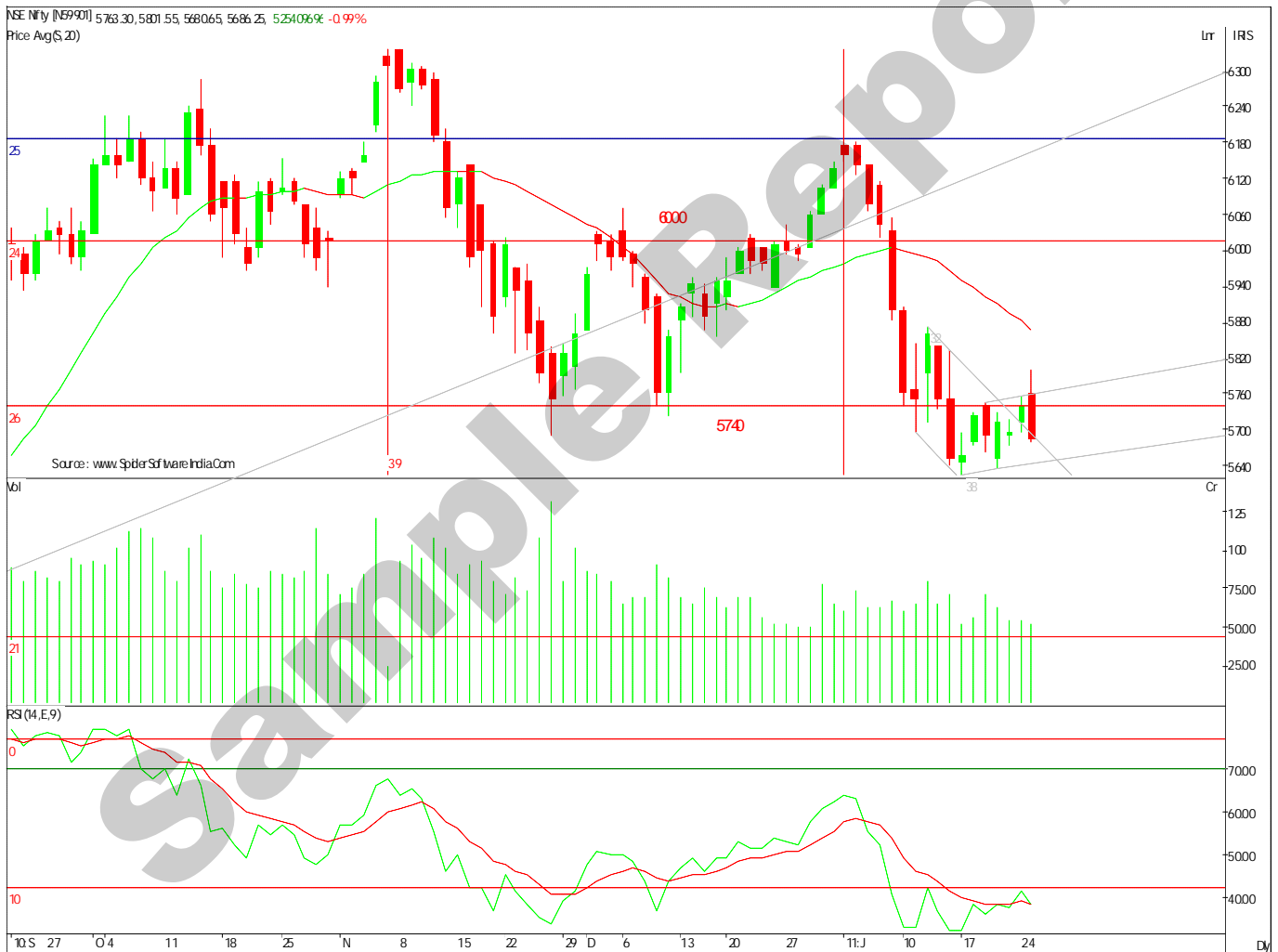
SENSEX : 18968
Range : 18920-19100
Resistance : 19195-19270-19330-19420
Support : 18920-18870-18770-18630

BANK NIFTY : 10905
Range : 10835-10960
Resistance : 10960-11045-11145-11200
Support : 10835-10770-10740-10660

"If you limit your choices only to what seems possible or reasonable, you disconnect yourself from what you truly want."

Short term trend: **Down (Up above 5720/1980 (closings))** Medium term trend: **Down (Down below 5690/18950 (closings))**
Long term trend: **Up**
NIFTY: 20 SDMA: 5866, 50 SDMA: 5909 AND 200 SDMA: 5619

Nifty - Daily



Tuesday was one more major day for the market as it has broken highest as well as lowest level of the previous day and closed below it. Such type of reversal patterns indicate at "more weakness on the card". However, as it was the day of major event (Credit Policy) we will consider (highest and lowest of the day) 5680 and 5802 levels are the trend decider levels for the market and sustenance below or above these levels will certainly extend the move.

For the day 5680/5670 may act as an immediate support for the market and sustenance below 5670 may pull the market to 5635 levels again. In case the market sustains 5670 level in the second half of the trading session then it may again bounce to 5730/5740 levels. In brief the activity may remain muted today if it holds 5670/5680.

Indices Highlights (25 Jan 2011)

Category/Index	Close	52 Week		52 week % chg		Performance	
		High	Low	Low	High	High	Low
SENSEX	18,969.45	21,108.64	15,651.99	17.49	-10.13		
MIDCAP	7,222.79	8,791.10	6,276.91	13.10	-17.84	UNDER PERFORMANCE	UNDER PERFORMANCE
SMLCAP	8,985.14	11,366.68	7,926.82	11.78	-20.95	UNDER PERFORMANCE	UNDER PERFORMANCE
BSE-100	9,916.01	11,192.91	8,372.70	15.56	-11.41	UNDER PERFORMANCE	UNDER PERFORMANCE
BSE-200	2,354.72	2,671.95	1,990.25	15.48	-11.87	UNDER PERFORMANCE	UNDER PERFORMANCE
BSE-500	7,401.04	8,434.05	6,280.99	15.13	-12.25	UNDER PERFORMANCE	UNDER PERFORMANCE
DOLLEX-30	3,405.99	3,918.30	2,738.86	19.59	-13.07	UNDER PERFORMANCE	OUT PERFORMANCE

Sectoral Indices

AUTO	9,289.52	10,536.92	6,721.57	27.64	-11.84	UNDER PERFORMANCE	OUT PERFORMANCE
BANKEX	12,349.75	15,108.27	9,137.36	26.01	-18.26	UNDER PERFORMANCE	OUT PERFORMANCE
CD	6,277.90	7,369.77	3,692.85	41.18	-14.82	UNDER PERFORMANCE	OUT PERFORMANCE
CG	13,706.97	16,860.58	12,684.81	7.46	-18.70	UNDER PERFORMANCE	UNDER PERFORMANCE
FMCG	3,487.72	3,802.64	2,646.32	24.12	-8.28	OUT PERFORMANCE	OUT PERFORMANCE
HC	6,451.28	6,871.32	4,633.47	28.18	-6.11	OUT PERFORMANCE	OUT PERFORMANCE
IT	6,606.02	6,921.41	4,758.86	27.96	-4.56	OUT PERFORMANCE	OUT PERFORMANCE
METAL	16,786.38	18,736.77	13,827.74	17.63	-10.41	UNDER PERFORMANCE	OUT PERFORMANCE
OIL&GAS	9,684.67	11,270.27	8,940.07	7.69	-14.07	UNDER PERFORMANCE	UNDER PERFORMANCE
POWER	2,812.84	3,393.32	2,745.13	2.41	-17.11	UNDER PERFORMANCE	UNDER PERFORMANCE
PSU	8,882.63	10,708.33	8,578.42	3.42	-17.05	UNDER PERFORMANCE	UNDER PERFORMANCE
REALTY	2,487.28	4,034.35	2,431.82	2.23	-38.35	UNDER PERFORMANCE	UNDER PERFORMANCE

Research Team**Dipen Shah**

IT, Media
dipen.shah@kotak.com
+91 22 6621 6301

Sanjeev Zarbade

Capital Goods, Engineering
sanjeev.zarbade@kotak.com
+91 22 6621 6305

Teena Virmani

Construction, Cement, Mid Cap
teena.virmani@kotak.com
+91 22 6621 6302

Saurabh Agrawal

Metals, Mining
agrawal.saurabh@kotak.com
+91 22 6621 6309

Saday Sinha

Banking, NBFC, Economy
saday.sinha@kotak.com
+91 22 6621 6312

Arun Agarwal

Automobiles
arun.agarwal@kotak.com
+91 22 6621 6143

Ruchir Khare

Capital Goods, Engineering
ruchir.khare@kotak.com
+91 22 6621 6448

Jayesh Kumar

Economy
kumar.jayesh@kotak.com
+91 22 6652 9172

Ritwik Rai

FMCG, Media
ritwik.rai@kotak.com
+91 22 6621 6310

Sumit Pokharna

Oil and Gas
sumit.pokharna@kotak.com
+91 22 6621 6313

Shrikant Chouhan

Technical analyst
shrikant.chouhan@kotak.com
+91 22 6621 6360

K. Kathirvelu

Production
k.kathirvelu@kotak.com
+91 22 6621 6311

Disclaimer

This document is not for public distribution and has been furnished to you solely for your information and must not be reproduced or redistributed to any other person. Persons into whose possession this document may come are required to observe these restrictions.

This material is for the personal information of the authorized recipient, and we are not soliciting any action based upon it. This report is not to be construed as an offer to sell or the solicitation of an offer to buy any security in any jurisdiction where such an offer or solicitation would be illegal. It is for the general information of clients of Kotak Securities Ltd. It does not constitute a personal recommendation or take into account the particular investment objectives, financial situations, or needs of individual clients.

We have reviewed the report, and in so far as it includes current or historical information, it is believed to be reliable though its accuracy or completeness cannot be guaranteed. Neither Kotak Securities Limited, nor any person connected with it, accepts any liability arising from the use of this document. The recipients of this material should rely on their own investigations and take their own professional advice. Price and value of the investments referred to in this material may go up or down. Past performance is not a guide for future performance. Certain transactions - including those involving futures, options and other derivatives as well as non-investment grade securities - involve substantial risk and are not suitable for all investors. Reports based on technical analysis centers on studying charts of a stock's price movement and trading volume, as opposed to focusing on a company's fundamentals and as such, may not match with a report on a company's fundamentals.

Opinions expressed are our current opinions as of the date appearing on this material only. While we endeavor to update on a reasonable basis the information discussed in this material, there may be regulatory, compliance, or other reasons that prevent us from doing so. Prospective investors and others are cautioned that any forward-looking statements are not predictions and may be subject to change without notice. Our proprietary trading and investment businesses may make investment decisions that are inconsistent with the recommendations expressed herein.

Kotak Securities Limited has two independent equity research groups: Institutional Equities and Private Client Group. This report has been prepared by the Private Client Group. The views and opinions expressed in this document may or may not match or may be contrary with the views, estimates, rating, target price of the Institutional Equities Research Group of Kotak Securities Limited.

We and our affiliates, officers, directors, and employees world wide may: (a) from time to time, have long or short positions in, and buy or sell the securities thereof, of company (ies) mentioned herein or (b) be engaged in any other transaction involving such securities and earn brokerage or other compensation or act as a market maker in the financial instruments of the company (ies) discussed herein or act as advisor or lender / borrower to such company (ies) or have other potential conflict of interest with respect to any recommendation and related information and opinions.

The analyst for this report certifies that all of the views expressed in this report accurately reflect his or her personal views about the subject company or companies and its or their securities, and no part of his or her compensation was, is or will be, directly or indirectly related to specific recommendations or views expressed in this report.

No part of this material may be duplicated in any form and/or redistributed without Kotak Securities' prior written consent.